

Kvaser Memorator Professional



Application Support

- ATI Vision™
- ATI Apollo™
- ATI CANlab™
- Ficoso CANica™
- Kvaser CanKing™
- National Instruments LabView™
- National Instruments DIAdem™
- VAT 2000™
- Vector CANalyzer™
- Vector CANoe™
- Vector CANape™
- Warwick X-Analyzer™
- Xtm™

Supported OS

- Windows Vista™
- Windows 2000/XP™
- Windows 98/ME™
- Windows NT4™
- WinCE™
- Linux

Product Versions

- Kvaser Memorator Professional HS/HS
- Support for Kvaser Linx

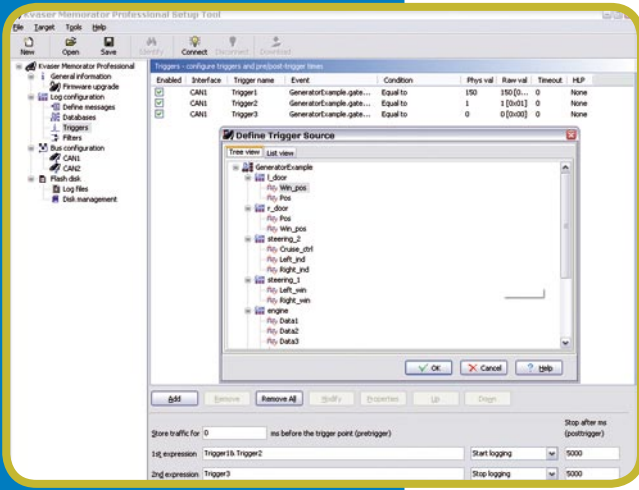
Kvaser Memorator Professional provides the functionality of a standalone CAN bus data logger and a USB CAN bus interface in a single device. When combined with the Kvaser Linx, the Kvaser Memorator Professional also supports bus types like LIN, J1587, and SWC.

Stand Alone Data Logger Features

- Capture irregular faults in the field or perform remote diagnosis.
- Easy to use graphic configuration tool – Kvaser Memorator Professional Setup Tool.
- Create advanced triggers based on messages, data signal values, error messages, external trigger's falling or rising edge, and I/O signals.
- Use pre- and post triggers without any buffer size restrictions.
- Set up pass, stop, and counting pass filters.
- Transmit messages to the bus network.
- External digital output that can drive a LED or a buzzer.
- 250 ms boot up time.
- Support for SD cards with a memory capacity up to 2GB, larger SDHC cards supported in the future – up to 32GB.
- Set up several devices in daisy-chain for larger logging capacity.
- Transfer recorded data over the USB interface at 1.4 MB/s or an SD card reader at 15 MB/s.
- Supports Silent Mode – log bus traffic without interfering.

Bus Interface and General Features

- Offers the same excellent software support, features and performance as Kvaser USBcan Professional.
- Power supplied through the CAN bus or through the USB interface.
- Plastic housing dimensions are approximately 50x90x25 mm (WxLxH).
- Device status indicated with five externally visible LEDs.



Kvaser Memorator Professional Setup Tool

The stand alone setup tool provides easy direct access for configuring baudrates, trigger conditions, and filters. The program also provides all the necessary functionality for managing logged data on your memory cards: disk formatting, disk erasing, and log data extraction.

Setup Tool Functions

Channel Configuration

Modify the CAN channels' settings: bitrate, sampling point, silent mode, J1939 mode and more.

Filters

Use stop and pass filters to control which messages and signals are logged. Create a counting pass filter to have a message logged at enumerated occurrence.

Triggers

Log continuously or create triggers to control when frames are logged. Create up to 16 advanced trigger conditions. These conditions can include an external trigger, the reception of a specific message, or the condition of a specific signal in a message. You can also set a pre-trigger and post-trigger recording time to help capture relevant data.

Flash Disk Management

Use SD or MMC memory card (flash disk) to store the logger configuration and hold all logged data files. Retrieve the logged files from the flash disk by connecting the Kvaser Memorator Professional or a card reader to your PC.

Databases

Add one or more database files when creating triggers and filters. Create and edit database message definitions with the included database editor.

Kvaser Dispatcher

Using the included software Kvaser Dispatcher, a complete measurement setup can be turned into a self-installing package that is sent to a remote location to carry out a specific logging task.

Technical Data

Kvaser Memorator Professional

USB interface	2.0
Number of CAN channels	2
Galvanic isolation	Yes
Bus interface performance (msgs/s)	40 000
Data logging performance (msgs/s)	20 000
Time stamp accuracy	2µs
Silent Mode	Yes
CAN 2.0 A and 2.0 B	Yes
Current consumption	130 mA
Temperature range	-40 +85 °C
USBCan Professional performance	Yes

The information herein is subject to change without notice

KVASER

Aminogatan 25
SE 431 53 Mölndal, Sweden
Telephone: +46 (0)31 88 63 44
Fax: +46 (0)31 88 63 43
E-mail: sales@kvaser.com

www.kvaser.com

© 2006 KVASER AB